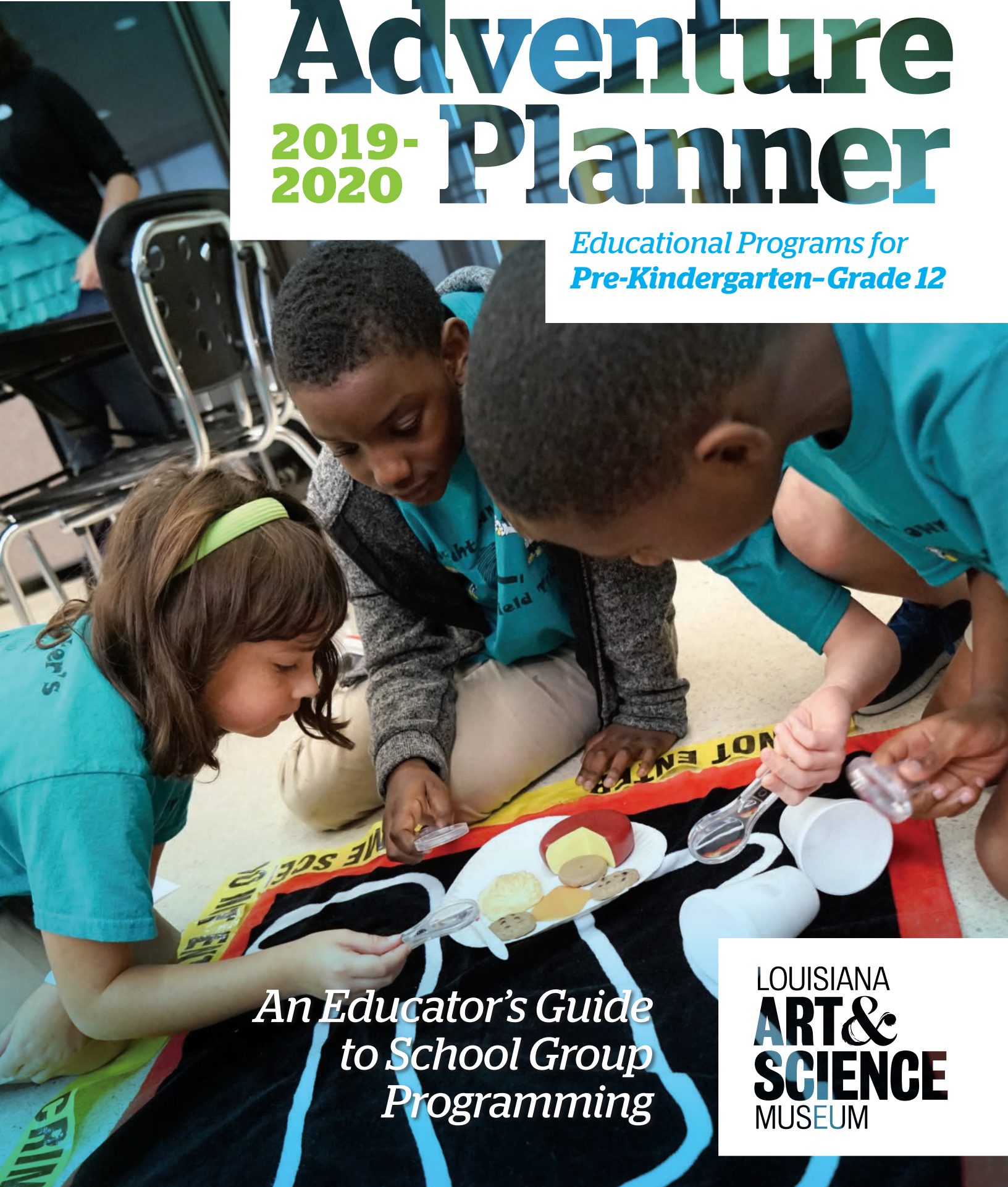


Louisiana Art & Science Museum

Adventure 2019-2020 Planner

*Educational Programs for
Pre-Kindergarten-Grade 12*



*An Educator's Guide
to School Group
Programming*

LOUISIANA
**ART &
SCIENCE**
MUSEUM

Join us

and discover how
art & science
shape each other, our
lives, and the world.

Journey through the cosmos in the Irene W. Pennington Planetarium, explore a mummy's tomb, and encounter a 65-million-year-old *Triceratops* skull.

Our school group experiences can be transformative for your students because programs build on one another, bridge disciplines, and create connections between objects, ideas, and experiences. Participate in hands-on classes, immerse yourselves in extraordinary stories under the planetarium dome, and discover the world through interpretation of art and museum objects in our galleries.

Layered experiences open new worlds at the Louisiana Art & Science Museum. Our programs spark big ideas and give meaning to what your students learn. We have designed them to meet your educational expectations, address curriculum requirements, and foster a lifelong love of learning. Please consider our sample itineraries of layered programming on page 13 of this *Adventure Planner*.

Special Fall Offer Free 30-minute Guided Tour!

Schedule any class, planetarium show, or interactive educational theater for the Fall 2019 semester, and your group will receive one **free** 30-minute Guided Tour or Hands-On Gallery experience of your choice.

lasm.org/AP

Experience the convenience of our educator website!

- Custom search by grade, program type, and subject.
- Register digitally with our online form.



AFFILIATE

We offer a wide range of educational programs for students in Pre-Kindergarten through grade 12, including:

- **Hands-On Classes** (1.5 hours)
- **Irene W. Pennington Planetarium Shows** (1 hour)
- **Interactive Educational Theater** (1 hour)
- **Guided Explorations** (1 hour), **Guided Tours** (30 minutes), and **Hands-On Galleries** (30 minutes).
- **Art & Science Galleries**, including changing fine art exhibitions, an Ancient Egypt Gallery, and a Solar System Gallery
- **Discovery Dome**, a portable planetarium that travels to your school

We look forward to another great year of learning experiences for you and your students, and we thank you for allowing us to be an extension of your classroom!

LOUISIANA **ART & SCIENCE** MUSEUM

Page 2
Planning Your Visit

Pages 3 - 4
Planetarium Shows

Pages 5 - 7
Classes

Page 8
Interactive
Educational Theater

Page 9
Guided Tours &
Guided Explorations

Page 10
Exhibitions & Galleries

Page 11
Hands-On Galleries

Page 12
Discovery Dome

Page 13
Museum Store &
Sample Itineraries

Page 14
School Reservation
Request Form

Page 15
Directions & Parking

We Appreciate Our Teachers!

As a thank you gift, we now offer a **free**, year-long special teacher membership, which includes free Museum and Planetarium admission, to all teachers who attend or book a field trip during the 2019-2020 school year.

Planning Your Visit

to the Louisiana Art & Science Museum

Use this Adventure Planner to design your visit. Please fill out the **School Reservation Request Form** on page 14 or online at lasm.org/AP!

If you have any questions regarding scheduling or programming, contact us at reservations@lasm.org or 225.344.5272, ext. 142. We will be happy to assist you in creating an unforgettable learning experience for your students.

Booking Your Visit

Field trip itineraries are customized for your group and based on program selections. When completing the School Reservation Request Form, double-check the accuracy of your information and provide an estimation of parents/chaperones attending. Space is not guaranteed for parents/chaperones who are not included in the reservation. An accurate total of participating adults and students is required at least one week prior to your visit.

Send your reservation form in one of three ways:

ONLINE: lasm.org/AP/register

FAX: 225.214.1445

MAIL: 100 River Road South,
Baton Rouge, LA 70802

Your itinerary will be sent in a confirmation packet within three business days. Please review and then sign and return the School Visit Confirmation Form by the due date to confirm your visit. Cancellation or modification of your schedule should be made well in advance of your visit.

Preparing for Your Visit Day

Include all student fees in the final payment, which must be made the day of your visit. **School staff members accompanying students are admitted free of charge.** Checks made out to Louisiana Art & Science Museum, cash, and credit cards are all accepted. Refunds for overpayments will be mailed to your school minus a \$15 processing fee.

An accurate count of the students, school staff, and parents/chaperones attending the visit is required at check-in. If your itinerary requires you to divide your students into equal sub-groups, such as A, B, C, or D, please do so before leaving your school.

Review your confirmation packet for policies and procedures regarding cancellations. One week before your visit date, you will be emailed information about parking downtown. Please share parking information with parents/chaperones and bus drivers.

During Your Visit

We welcome you to take photographs in hands-on galleries, during classroom and auditorium programs, and before and after programs in the planetarium theater. Photography and videography may not be permitted in all galleries.

Enjoy the visit! We look forward to a wonderful day with your group.

Share Your Experience

We would love to receive pictures of your visit! If you want to share your Art & Science Museum photographs with us, share your images by tagging us in your posts on Facebook, Twitter, and Instagram!

 @theLASM  @LASM  @LASMbr

Programs fill up quickly – book early to ensure your desired date and programs!

IRENE W. PENNINGTON

Planetarium Shows

With a fulldome screen and state-of-the-art technology, our immersive planetarium shows connect your students with topics ranging from dinosaurs and butterflies to our solar system and beyond.

GROUP SIZE:

171 maximum

TIMES:

On the hour

LENGTH:

Allow 1 hour

COST:

\$6.75 per student & chaperone

* Dipper's Adventure

GRADES PRE-K-1

Dipper the Bear takes young students on a fun-filled, interactive camping adventure to discover constellations, our Moon, and other daytime and nighttime objects in the sky. This live, educator-led program is great for first-time visitors to the planetarium.

* † One World, One Sky: Big Bird's Adventure

GRADES PRE-K-1

Elmo's friend Hu Hu Zhu visits Sesame Street and discovers that Elmo can see the same stars that he sees in China. He and your students will learn how to locate the Moon, the Big Dipper, and the North Star in the nighttime sky.

† Flight of the Butterflies

GRADES K-12

Follow the monarchs' perilous journey, join hundreds of millions of real butterflies in the remote mountain peaks of Mexico, and discover the compelling true story of a scientist's 40-year search to find the monarchs' secret hideaway in this beautiful scientific adventure.

Layered Experience: Pairs well with *The Traveling Trunk Show (Interactive Educational Theater)* and *Beetles, Bugs, & Butterflies (Class)*.

* Preceded by a live, presenter-led tour of the current seasonal night sky. To preview any of these shows, please email reservations@lasm.org.

† This planetarium show offers an Educator's Guide. Visit lasm.org/ap/educator-guides to access the guide.

Programs are subject to change. If you don't see your favorite planetarium show from a previous visit, please ask if we can make it available.

* The Little Star That Could

GRADES 1-2

You and your students will follow Little Star, an average yellow star, in search of planets of his own to protect and warm. Along the way, he meets other stars, learns what makes each star special, and discovers that stars combine to form star clusters and galaxies. Eventually, Little Star finds his planets. Each planet in our solar system is introduced to your students during this fun and educational planetarium show.

Layered Experience: Pairs well with *Solar System Gallery (Guided Tour)* or *Astronomy (Guided Exploration)*.

* Magic Tree House Space Mission

GRADES 1-5

A mysterious "M" sends the adventurous Jack and Annie on a fun-filled journey to discover the secrets of the Sun, Moon, planets, space travel, and more. This beautifully-produced show is great for Magic Tree House book fans and school audiences alike.

Layered Experience: Pairs well with *The Art of Astronomy (Class)*, *Solar System Gallery (Guided Tour)*, or *Astronomy (Guided Exploration)*.

America's Musical Journey New!

GRADES 1-12

From New Orleans to New York City: a story of culture, creativity, and the music that shaped America. Join us for this cross-country adventure through the musical heritage of America and the cultural cities where America's music was born. Narrated by Morgan Freeman.

Layered Experience: Pairs well with *Shake, Rattle, & Roll (Interactive Educational Theater)*.

* † Apollo 11: First Steps Edition New!

GRADES 1-12

Crafted from a newly-discovered trove of 70 mm footage and more than 11,000 hours of audio recordings, *Apollo 11* takes us straight to the heart of NASA's most celebrated mission: the one that first put men on the moon, and forever made Neil Armstrong and Buzz Aldrin household names. Immersed in the perspectives of the astronauts, the team in Mission Control, and the millions of spectators on the ground, we vividly experience those momentous days and hours in 1969 when humankind took a giant leap into the future.

Layered Experience: Pairs well with *Solar System Gallery (Guided Tour)* or *Astronomy (Guided Exploration)*.

† Dream Big: Engineering Our World

GRADES 1-12

Dream Big celebrates the human ingenuity behind engineering marvels big and small, and reveals the heart that drives engineers to create better lives for people around the world while transforming the way we think about engineering.

Layered Experience: Pairs well with *Marbles, Motion, & Magnets, Engineering: Simple Machines, Engineering Encounters, and Robot Design Challenge (Classes)*.

‡ Jean-Michel Cousteau's Secret Ocean

GRADES 1-12

Jean-Michel Cousteau, son of ocean pioneer Jacques Cousteau, invites you to dive into this whole new world that will leave you in awe of the beauty and diversity of the oceans - the source of all life on our planet. Secret Ocean introduces audiences to over 30 species, illuminating behaviors captured for the first time thanks to new underwater filming tools.

‡ National Parks Adventure

GRADES 1-12

Join us for the ultimate off-trail adventure into America's awe-inspiring great outdoors. You and your students will journey through some of America's most majestic wild places and discover a tapestry of natural wonders that will inspire the adventurer in all of us.

* Earth, Moon & Sun

GRADES 2-8

Explore the relationship between the Earth, Moon, and Sun with the help of Coyote, an amusing character adapted from Native American oral traditions. Your students will discover solar and lunar eclipses along with the Moon's orbit, craters, and phases.

Layered Experience: Pairs well with *The Art of Astronomy (Class)*.

* Ventures through Our Solar System

GRADES 3-5

The planetarium is transformed into a space transport vehicle as we buckle our seatbelts and join the countdown for a live, immersive, and interactive adventure to uncover the latest NASA planetary discoveries throughout our solar system. Included are findings from the New Horizon spacecraft visit to Pluto.

Layered Experience: Pairs well with *The Art of Astronomy (Class)* and *Solar System Gallery (Guided Tour)* or *Astronomy (Guided Exploration)*.

* Earth's Wild Ride

GRADES 3-6

Visit a Moon colony in 2081 during a solar eclipse and experience an exciting ride across both the Earth and Moon as a grandfather tells his grandchildren stories of our planet. Your students will learn about eclipses, the ice age, Earth's water cycle, and the differences between our Earth and Moon.

Layered Experience: Pairs well with *Weatherwise (Interactive Educational Theater)* and *Solar System Gallery (Guided Tour)* or *Astronomy (Guided Exploration)*.

‡ Dinosaur Passage to Pangaea

GRADES 3-8

This delightful claymation adventure explains one of the greatest geological events in the history of Earth: the separation of the supercontinent Pangaea. When two children embark on a geology field trip, they are thrown into a fantastic voyage in which they witness incredible geological wonders and explore the mysterious process that created our present day continents.

Layered Experience: Pairs well with *Solar System Gallery (Guided Tour)* or *Geology (Guided Exploration)* and *Frameworks of Absence: Brandon Ballengée (Art Exhibition Guided Tour or Exploration)*.

* ‡ Secrets of Gravity: In the Footsteps of Albert Einstein

GRADES 3-8

Join us for an exciting voyage of discovery through space and time as your students learn about the laws of nature and the discoveries of Albert Einstein as well as his own philosophy of remaining inquisitive and discovering the world for yourself. This is an animated show which uses the latest technological developments and combines fascinating facts with an emotional story, generating an enduring learning effect.

Layered Experience: Pairs well with *Marbles, Motion, & Magnets (Class)* and *Solar System Gallery (Guided Tour)* or *Astronomy (Guided Exploration)*.

‡ Dinosaurs: Giants of Patagonia New!

GRADES 3-12

You and your students will follow Rodolfo Coria, a world-renowned Argentinian paleontologist visiting sites of major discoveries in Patagonia, and travel back in time to see these amazing beasts come to life on the giant screen. Patagonia has given us the largest living animal to ever walk the Earth, the titanesque, plant-eating *Argentinosaur*, and its nemesis, the *Giganotosaur*, a bipedal carnivore that could easily challenge the famous T-Rex.

Layered Experience: Pairs well with *Solar System Gallery (Guided Tour)* or *Geology (Guided Exploration)* and *Frameworks of Absence: Brandon Ballengée (Art Exhibition Guided Tour or Exploration)*.

‡ Mummies: Secrets of the Pharaohs

GRADES 4-12

Part historic journey and part forensic adventure, this show follows scientists and explorers as they piece together the archaeological and genetic clues of Egyptian mummies and reveal the mysterious world of the pharaohs.

Layered Experience: Pairs well with *Ancient Egypt Gallery (Guided Exploration)*, *Ancient Egypt & Its Art (Class)*, and *Forensic Crime Lab (Class)*.

* ‡ Cosmic Colors: An Adventure Along the Spectrum New!

GRADES 5-12

Cosmic Colors will take you on a wondrous journey across the entire electromagnetic spectrum. Discover the many reasons for color, like why the sky is blue and why Mars is red. Take a tour within a plant leaf and journey inside the human eye. Investigate x-rays by voyaging to a monstrous black hole and then back at your doctor's office. You will even see the actual color of a dinosaur, based on recent evidence. Get ready for an amazing adventure under a rainbow of cosmic light!

Layered Experience: Pairs well with *Harmonies in Color (Art Exhibition Guided Tour or Exploration)* and *Bright Light (Class)*.

* Two Small Pieces of Glass: The Amazing Telescope

GRADES 5-12

Follow the history of the telescope, from Galileo's modifications to the spy glass - using two small pieces of glass - to the launch of NASA's Hubble Space Telescope and the future of astronomy. Your students will learn how telescopes work and how the largest observatories in the world use these amazing instruments to explore the mysteries of the universe.

Layered Experience: Pairs well with *The Art of Astronomy (Class)* and *Solar System Gallery (Guided Tour)* or *Astronomy (Guided Exploration)*.

* We Are Stars

GRADES 5-12

Join us for an adventure that starts with a little stardust and builds over billions of years to become our world. Topics include the formation of hydrogen, nuclear fusion in stars, formation of asteroids, the synthesis of carbon, the creation of our own solar system, and the emergence of the very first living cells on Earth. *We Are Stars* is an incredible ride that explores the secrets of our cosmic chemistry and explosive origins.

Layered Experience: Pairs well with *Solar System Gallery (Guided Tour)* or *Astronomy (Guided Exploration)*.

* Seeing!

GRADES 6-12

Narrated by Neil deGrasse Tyson, this show takes visitors on an amazing journey of a single photon as it is produced in a distant star, before travelling across the vast expanse of space to land on someone's retina. This full-dome planetarium show explores some of the fascinating processes of the cosmos, from astrophysics to the biology of the eye and the brain.

Layered Experience: Pairs well with *Bright Light (Class)* and *Harmonies in Color (Art Exhibition Guided Tour or Exploration)*.

* A Hitchhiker's Tour through the Universe

GRADES 8-12

A Hitchhiker's Tour through the Universe is an exciting opportunity for your students to explore the world's most extensive and accurate three-dimensional mapping of the contents of the universe.

Classes

Let our experienced educators bring your classroom topics to life. Cross disciplines with us through hands-on learning that creates connections, yields new discoveries, and deepens understanding. Classes focus on the subjects of art, science, or creative integration, many combining these subjects in unique ways.

GROUP SIZE:

15 minimum/35 maximum

TIMES:

9:30AM-11:00AM & 11:30AM-1:00PM

COST:

\$6.75 per student & parent/chaperone



Little Art Explorers Updated!

GRADES PRE-K-K

Students learn how artists use shapes and colors to create art with inspiration from Henri Matisse and Jacob Lawrence. Young artists use their imaginations and creative skills to make their own original collages. Following a discussion of the color wheel, students get hands-on with fun color mixing activities.

Beetles, Bugs, & Butterflies

GRADES PRE-K-2

This artful approach to science motivates students to explore the amazing world of insects while learning about adaptations, physiology, and the role insects play in their daily lives. Colorful, take-home art projects creatively reinforce scientific concepts.

Layered Experience: *Pairs well with The Traveling Trunk Show (Interactive Educational Theater) and Flight of the Butterflies (Planetarium Show).*

Programs are subject to change.

Geometry & Quilts Updated!

GRADES 1-3

Through hands-on activities, students will recognize the real-world connections between mathematics and the craft of quilting. Students are introduced to traditional patchwork quilts and participate in art-making that supports geometry standards while reinforcing mathematical understanding.

Marbles, Motion, & Magnets New!

GRADES 1-3

In this STEAM-focused learning experience, students will investigate matter and its interactions with force and motion. While creating art, participants will explore Newton's Laws of Motion and the concept of magnetism.

Layered Experience: *Pairs well with Dream Big: Engineering Our World and Secrets of Gravity: In the Footsteps of Albert Einstein (Planetarium Shows).*

Engineering: Simple Machines

GRADES 2-4

As they cooperatively problem-solve in groups, young engineers will investigate the effects of balanced and unbalanced forces on the motion of objects while building various machines. Exciting hands-on challenges will focus on Newton's Laws of Motion and the Law of Conservation of Energy. Activities will illustrate the relevance of engineering in daily life as students design and build together.

Layered Experience: *Pairs well with Dream Big: Engineering Our World and Secrets of Gravity: In the Footsteps of Albert Einstein (Planetarium Shows).*

Circuit Circus

GRADES 3-4

Students become energized as they form a human circuit, experiment with conductors and insulators, and construct various types of circuits. Scientific investigation, problem solving, and cooperative learning engage students in this electrifying educational experience!

Mystery Crime Lab

GRADES 3-4

Junior Forensic Scientists investigate and analyze the evidence at a staged crime scene to solve a mystery. Students experiment with blood typing; chromatography; fingerprinting; and other interdisciplinary, hands-on activities. **This class requires the participation of at least six chaperones willing to serve as "forensic assistants."**

Layered Experience: *Pairs well with Ancient Egypt Gallery (Guided Tour or Exploration) and Mummies: Secrets of the Pharaohs (Planetarium Show).*

Bright Light

GRADES 3-6

In this illuminating exploration of light and color, students make exciting discoveries as they experiment with lasers, diffraction glasses, and giant water prisms. Through real-life applications, the scientific concepts of refraction, diffraction, and reflection are illustrated with engaging educational activities related to spectrum analysis and the electromagnetic spectrum.

Layered Experience: *Pairs well with Harmonies in Color (Art Exhibition Guided Tour or Exploration), Seeing!, and Cosmic Colors: An Adventure Along the Spectrum (Planetarium Shows).*

The Art of Astronomy New!

GRADES 4-6

Science inspires art and art empowers science as students investigate the characteristics and composition of planets, stars, and deep-sky objects. Inquisitive learners will use the elements of art to connect Astronomy and Earth Science concepts.

Layered Experience: *Pairs well with Earth, Moon, & Sun, Magic Tree House Space Mission, and Ventures through Our Solar System (Planetarium Shows).*

Engineering Encounters

GRADES 4-6

Through bridge-building activities, students gain a new appreciation for the relevance of civil engineering and design in their daily lives. Creative problem-solving strategies motivate aspiring engineers to explore concepts such as force, balance, and stability.

Layered Experience: *Pairs well with Dream Big: Engineering Our World (Planetarium Show), and Robot Design Challenge (Class).*



Ancient Egypt & Its Art

GRADES 4-8

Students tour the Ancient Egypt Gallery, learn an intricate, age-old metalworking technique, and then create an ancient Egyptian-inspired relief, which they can take home. **Includes tour of the Ancient Egypt Gallery.**

Layered Experience: Pairs well with *Mummies: Secrets of the Pharaohs (Planetarium Show)* and *Forensic Crime Lab (Class)*.

Robot Design Challenge

GRADES 4-8

Students sharpen their critical thinking and problem-solving skills to build modular robots. Working in teams, they will use the Science and Engineering Practices to develop inventions that sense, compute, and act upon the world around them. As students design their robots, they actually build a program through hands-on coding. This class culminates in a race that challenges each group to create the smartest and fastest robot.

Layered Experience: Pairs well with *Dream Big: Engineering Our World (Planetarium Show)* and *Engineering Encounters (Class)*.

Forensic Crime Lab

GRADES 5-6

Students analyze and interpret evidence to identify the victim and the perpetrator at a staged crime scene. They reach their conclusions by using chromatography, forensic entomology, blood typing, skeletal identification, and other means of discovery. **This class requires the participation of at least six chaperones willing to serve as “forensic assistants.”**

Layered Experience: Pairs well with *Ancient Egypt Gallery (Guided Tour or Exploration)*, *Mummies: Secrets of the Pharaohs (Planetarium Show)*, and *Ancient Egypt & Its Art (Class)*.

Investigating the Art Exhibition New!

GRADES 5-8

Inspired by objects and works of art in the current exhibition, students will explore interdisciplinary

connections based on the Louisiana Student Standards. After a participatory tour of the exhibition, they will enjoy hands-on, STEAM-focused activities in a classroom setting. Creative connections that link art with core curriculum content will make learning meaningful, relevant, and memorable. **Includes tour of the art exhibition on view.**

Journaling: Learning to Look & Looking to Write

GRADES 5-12

As students explore the art in the current exhibition, they are encouraged to look closely and reflect on what they see. Creative writing activities take place in the gallery, using the art on view for inspiration. These activities will sharpen observation skills as students respond to art through writing while exploring opportunities for collaboration and personal reflection. **Includes tour of the art exhibition on view.**

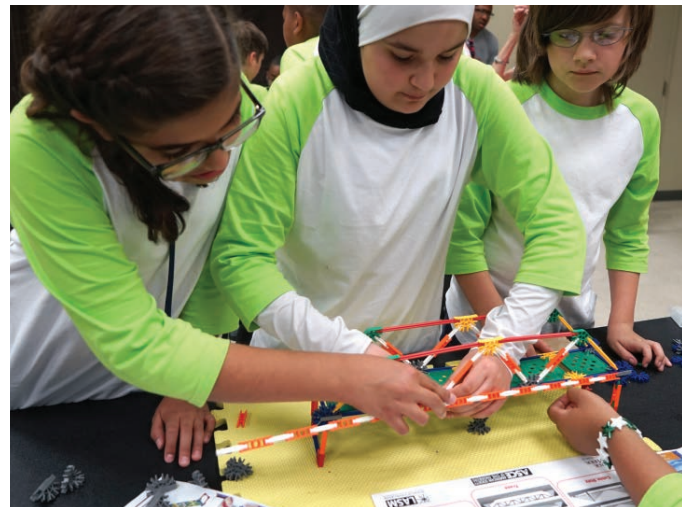
The River Dynamics Experience New!

GRADE 8

This exciting new program includes a visit to the LSU Center for River Studies and same-day, hands-on classes and programs at the Museum. On their tour of the CRS, students will explore a 3-dimensional model of the lower 190 miles of the Mississippi River, one of the most technologically-advanced models in existence. At the Museum, students will collaboratively design solutions to real-world environmental challenges by engaging with a state-of-the-art stream table. Participants will also view a related large-screen educational movie at the Museum. Activities are aligned with the Louisiana Student Standards for Science.

Through this partnership with the Coastal Protection and Restoration Authority, this learning opportunity is available free-of-charge to 8th-grade students on a first-come, first-served basis. Please email reservations@lasm.org to register as soon as possible!

Programs are subject to change.



Interactive Educational Theater

Dynamic learning takes center stage in our presenter-led interactive educational theater programs. Participation in games, songs, and more creates exciting learning experiences.

GROUP SIZE:

35 minimum/190 maximum

LENGTH:

Approximately 60 minutes

COST:

\$6.75 per student & parent/chaperone



The Traveling Trunk Show

GRADES PRE-K-K

Join our puppet pals Sheldon the Sheepdog and Frederick the Mouse on an imaginative, multidisciplinary exploration of the art and science of the seasons. Young students will enjoy songs, stories, and educational activities sprinkled with laughter and fun as they discover the exciting surprises awaiting them in the mysterious big red trunk!

Layered Experience: Pairs well with Flight of the Butterflies (Planetarium Show) and Beetles, Bugs, & Butterflies (Class).

Shake, Rattle, & Roll

GRADES PRE-K-5

Dr. Decibel, the Museum's Super Sound Scientist, leads students in an interactive exploration of the world of sound. "Junior Sound Scientists" will become familiar with key vocabulary terms and concepts relating to sound, learn about the anatomy of the ear, and experiment with unique musical instruments from across the globe. **This engaging program can easily be adapted for various grade levels.**

Layered Experience: Pairs well with America's Musical Journey (Planetarium Show).

Weatherwise

GRADES 2-5

The Museum's "Chief Meteorologist" Wendy Wise introduces students to the dynamic world of weather and its impact on the environment. This fast-paced educational adventure brings weather-related terms and concepts to life while keeping students engaged and entertained. Weatherwise also includes an overview of various tools and technologies in the field of meteorology used to study weather patterns.

Layered Experience: Pairs well with Earth's Wild Ride (Planetarium Show).

The Magic of Science

GRADES 3-6

Is science magical or is magic scientific? Students will explore the wonders of chemistry and physics in this interactive, presenter-led program that creatively engages them in the learning process. As they investigate the scientific principles behind exciting experiments and demonstrations, learners will discover that science is interesting, relevant, and fun!

Educational Movies

We offer hour-long educational movies on our 8-foot by 12-foot flat screen in the auditorium for **\$4.50** per student and chaperone. Offerings include *Whales*, *Forces of Nature*, and *Volcanoes of the Deep Sea*. For more information and resources on these films, visit lasm.org/AP.



Guided Tours & Explorations

Our galleries bridge disciplines by integrating art, science, history, and more. Through discussion, activities, and objects designed to enhance critical thinking, analysis, and visual literacy, your students will consider new perspectives that can be extended beyond the classroom.

Guided Explorations

Grades 1-8

Includes a 30-minute Guided Tour plus a related 30-minute hands-on activity.

- **Ancient Egypt Exploration:** Inspired by an encounter with an authentic 2,300-year-old mummy, explore hieroglyphics and create a replica of an ancient Egyptian artifact.
- **Art Exploration:** Create art in various media and styles based on concepts explored in the art exhibitions.
- **Astronomy Exploration:** Explore astronomy in the Solar System Gallery and engage with our state-of-the-art OmniGlobe.
- **Geology Exploration:** Get hands-on with geological processes and activities in the Solar System Gallery.

GROUP SIZE

15 minimum/35 maximum

LENGTH

Approximately 60 minutes

COST

\$5.25 per student & parent/chaperone

Guided Tours

Grades PRE-K-12

See Page 10 for gallery age requirements.

- Experience artwork by famous artists, artifacts, fossils, and more! Uncover not only the stories and meaning behind the objects, but also the processes that created the objects.
- **Ancient Egypt Gallery Tour**
- **Art Exhibition Tour**
- **Solar System Gallery Tour**

GROUP SIZE

15 minimum/35 maximum

LENGTH

Approximately 30 minutes

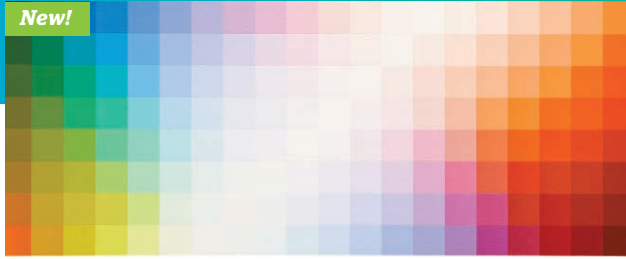
COST

\$2.00 per student & parent/chaperone

For more information on exhibitions, please visit lasm.org/AP. Exhibitions and dates are subject to change.

Exhibitions & Galleries

New!



Harmonies in Color

Main Galleries, Aug. 24, 2019 – Mar. 1, 2020

GRADES PRE-K-12

This colorful exhibition focuses on the sensory experience of color as seen in the work of seven nationally-renowned artists. While touring this exhibition, your students will learn about artistic and scientific concepts such as optics, color theory, and prisms.

Layered Experience: Pairs well with *Bright Light (Class)*, *Cosmic Colors: An Adventure Along the Spectrum*, and *Seeing! (Planetarium Shows)*.



Solar System Gallery

GRADES PRE-K-12

Explore the history of our universe from astronomy to paleontology in the Solar System Gallery. Students will encounter interactive displays that allow them to virtually travel to the Moon, learn about gravity, and more. An exhibition of minerals and fossils, including a 65-million-year-old authentic *Triceratops prosus* skull, will teach students about our aging planet.

Layered Experience: Pairs well with *Dinosaur Passage to Pangaea*, *Dinosaurs: Giants of Patagonia (Planetarium Shows)* and all *astronomy-themed planetarium shows*.

New!



Frank Hayden: Lift Every Voice

Main Galleries, Mar. 15 – Sept. 15, 2020

GRADES 1-12

Artworks by Baton Rouge artist Frank Hayden are found throughout our city, from the campuses of LSU and Southern University to public plazas. Students will learn about the life and work of this preeminent Louisiana sculptor whose artworks, which reflect deep spiritual and humanistic concerns with universal themes, are made of wood, plaster, fiberglass, and stone.



Ancient Egypt Gallery

GRADES 1-12

The Ptolemaic period (323-30 BC) comes to life in the Ancient Egypt Gallery. Students will learn about the ancient Egyptians' civilization, beliefs, and customs, and how these people interacted with their Greek and Roman neighbors. Enter a recreated tomb, which houses an authentic 2,300-year-old mummy, and learn how modern technology revealed some of this mummy's secrets.

Layered Experience: Pairs well with *Mummies: Secrets of the Pharaohs (Planetarium Show)*, *Mystery Crime Lab*, and *Forensic Crime Lab (Classes)*.

New!



Frameworks of Absence: Brandon Ballengée

Souçon Gallery, April 13, 2019 – Oct. 27, 2019

GRADES 1-12

This interdisciplinary art and science exhibition, which includes animal specimens on loan from the LSU Museum of Natural Science and the Louisiana State Arthropod Museum, will introduce your students to the concepts of biodiversity, extinction, and conservation.

Layered Experience: Pairs well with *Dinosaurs: Giants of Patagonia* and *Dinosaur Passage to Pangaea (Planetarium Shows)*.



Top left: Robert Swain, *Untitled (8x20-5x25 Red Orange)*, 2018, acrylic on canvas. Photographed by Yao Zu Lu. Image courtesy of the artist.

Middle left: Frank Hayden, *We*, 1978, bronze. Louisiana Art & Science Museum Collection. Gift of Louisiana National Bank, American Bank and Trust Co., Fidelity National Bank, Junior League of Baton Rouge, and Baton Rouge Bank.

Bottom left: Brandon Ballengée, *RIP Florida Black Wolf: After John James Audubon*, 1845/2016. Image courtesy of the artist.

Hands-On Galleries

Our hands-on, minds-on galleries let your students let your students make their own discoveries. Independent learning sparks big ideas.

GROUP SIZE:

15 minimum/35 maximum

LENGTH:

Approximately 30 minutes

COST:

\$2.00 per student & parent/chaperone

Discovery Depot

GRADES PRE-K-1

This gallery stimulates the imagination, encourages exploration, and invites creative play. After a trip through the Children's Playhouse, young chefs can enjoy nutrition-oriented role play in the kitchen center while little engineers operate the wooden train. Puzzles, books, and games provide plenty of additional opportunities for learning and fun.



Science Station

GRADES 2-12

Interaction with STEAM-focused exhibits makes learning meaningful, relevant, and exciting. Hands-on, minds-on activities in this unique gallery space encourage students to playfully engage in innovative, open-ended learning experiences. Design and building stations will elevate your students' love of discovery.



Discovery Dome

Can't come to us? Discovery Dome will travel to you!

GRADES PRE-K-12

Let us bring the immersive planetarium show experience to you with our portable, digital planetarium. The Discovery Dome is a state-of-the-art, fulldome, HD theater. The inflatable and room-sized Discovery Dome requires a minimum indoor space that is 25 feet square and 12 feet high with a nearby electrical outlet.

LENGTH:

30-minute presentations, with 15 minutes between each

GROUP SIZE:

Approximately 30 maximum

FEEES FOR EAST BATON ROUGE PARISH LOCATIONS:

\$425 (Includes 4 presentations; maximum 3 hours)

\$725 (Includes 8 presentations; maximum 5 hours)

FEEES FOR LOCATIONS OUTSIDE EAST BATON ROUGE PARISH:

\$500 (Includes 4 presentations; maximum 3 hours)

\$800 (Includes 8 presentations; maximum 5 hours)

There is also a mileage fee for locations outside East Baton Rouge Parish. Additional travel fees may also apply for locations over 1.5 hours from the Museum.

Programs:

One World, One Sky: Big Bird's Adventure
Grades Pre-K-1

Let It Snow Grades Pre-K-12

Magic Tree House Space Mission Grades 1-5

Earth's Wild Ride Grades 3-6

Two Small Pieces of Glass Grades 4-12

From the Blue Planet to the Red Planet
Grades 5-8

We Are Stars Grades 5-12

Reserve the Discovery Dome

Online at lasm.org/AP/discovery-dome.

For more information on programming and availability, please email reservations@lasm.org.

The Museum Store



Our Museum Store is not a traditional “gift shop,” but rather an extension of our educational mission. Including a visit to the Museum Store provides your students with the opportunity to put into practice skills that they study in school, such as estimation, currency, valuation, rounding, budgeting, and independent decision making, all in the Museum’s controlled environment with assistance from store staff.

Our goal is to make your visit to the store easy, educational, and enjoyable. We encourage you to include us in your visit. Merchandise found in the store is related to the subject matter addressed in exhibitions, programs, and classes, and prices begin at only 75 cents.

For groups unable to shop due to age or time restrictions, the Museum Store offers **Art & Science To-Go Bags** for a modest price. Please contact the store at [225.344.5272](tel:225.344.5272), ext. **118** at least two weeks prior to your visit for this service.

Layered Experiences

Sample Itineraries

See below for suggested program pairings; other ideas for layered experiences are also listed throughout this Adventure Planner. Participation in different programs with similar topics builds connections and allows for deeper learning.

KINDERGARTEN-GRADE 2

Flight of the Butterflies

Planetarium Show

Beetles, Bugs, & Butterflies

Class

GRADES 1-3

Dream Big: Engineering Our World

Planetarium Show

Marbles, Motion, & Magnets

Class

GRADES 2-4

Secrets of Gravity: In the Footsteps of Albert Einstein

Planetarium Show

Engineering: Simple Machines

Class

GRADES 3-5

Weatherwise

Interactive Educational Theater

Earth's Wild Ride

Planetarium Show

GRADES 3-6

Harmonies in Color

Art Exhibition Guided Tour or Exploration

Bright Light

Class

Cosmic Colors: An Adventure Along the Spectrum

Planetarium Show

GRADES 4-6

The Art of Astronomy

Class

Earth, Moon & Sun

Planetarium Show

GRADES 4-6

Ancient Egypt & Its Art

Class

Mummies: Secrets of the Pharaohs

Planetarium Show

GRADES 4-6

Ancient Egypt Gallery

Guided Tour or Exploration

Forensics Crime Lab

Class

Mummies: Secrets of the Pharaohs

Planetarium Show

GRADES 4-6

Dream Big: Engineering Our World

Planetarium Show

Engineering Encounters

Class

Robot Design Challenge

Class

School Reservation Request Form

2019/2020

Make your reservation request in one of three ways:

- 1 Use the online form at:**
www.lasm.org/ap/register
- 2 Fax this form to:**
 225.344.1445

- 3 Mail this form to:**
 School Reservation Request Form
 100 River Road South
 Baton Rouge, LA 70802

For planning questions, please call 225.344.5272, ext. 142, or email reservations@lasm.org.

Selections

Consider adding one of our Hands-On Galleries (Discovery Depot or Science Station) to your visit!

Planetarium Shows

\$6.75

- America's Musical Journey
- Apollo 11: First Steps Edition
- Cosmic Colors: An Adventure Along the Spectrum
- Dinosaur Passage to Pangaea
- Dinosaurs: Giants of Patagonia
- Dipper's Adventure
- Dream Big: Engineering Our World
- Earth, Moon & Sun
- Earth's Wild Ride
- Flight of the Butterflies
- A Hitchhiker's Tour through the Universe
- Jean-Michel Cousteau's Secret Ocean
- The Little Star That Could
- Magic Tree House Space Mission
- Mummies: Secrets of the Pharaohs
- National Parks Adventure
- One World, One Sky: Big Bird's Adventure
- Secrets of Gravity: In the Footsteps of Albert Einstein
- Seeing!
- Two Small Pieces of Glass: The Amazing Telescope
- Ventures through Our Solar System
- We Are Stars

Classes

\$6.75

- Ancient Egypt & Its Art
- The Art of Astronomy
- Beetles, Bugs, & Butterflies
- Bright Light
- Circuit Circus
- Engineering Encounters
- Engineering: Simple Machines
- Forensic Crime Lab
- Geometry & Quilts
- Investigating the Art Exhibition
- Journaling: Learning to Look & Looking to Write
- Little Art Explorers
- Marbles, Motion, & Magnets
- Mystery Crime Lab
- The River Dynamics Experience
- Robot Design Challenge

Interactive Educational Theater

\$6.75

- The Magic of Science
- Shake, Rattle, & Roll
- The Traveling Trunk Show
- Weatherwise

Educational Movies

\$4.50

- Forces of Nature
- Volcanoes of the Deep Sea
- Whales

Guided Explorations

\$5.25

- Ancient Egypt Guided Exploration
- Art Exhibition Guided Exploration
- Astronomy Guided Exploration
- Geology Guided Exploration

Guided Tours

\$2.00

- Ancient Egypt Gallery Guided Tour
- Art Exhibition Guided Tour
- Solar System Gallery Guided Tour

Hands-On Galleries

\$2.00

- Discovery Depot
- Science Station

Other: _____

How would you like to receive your confirmation?

- Fax E-mail Mail

Lunch Information

Since we have no indoor dining facilities, we will gladly store the picnic lunches that you provide for your students in labeled bins. Groups are welcome to enjoy their lunches in Yazoo Plaza, an outdoor space on the north end of the building, or other nearby picnic areas. In the event of inclement weather, our staff will do their best to accommodate your group indoors.

Should we schedule a 30-minute break in your visit for lunch?

- Yes No

You can choose a scheduled 30-minute break for one of the following:

- Museum Store Restroom None

Next Step

Once you send in the School Reservation Request Form, we will send you an itinerary stating the date, time, schedule (subject to change), and cost per person. Please allow up to three business days to receive your itinerary. Return the signed visit confirmation on or before the due date. If we do not receive a signed document by the due date, your reservation will be canceled.

Programs are subject to change.

Public schools with proper documentation are exempt from paying Louisiana state sales tax when using a school-issued check or credit card.

School _____

Contact Person _____

Email Address _____

School Address _____

City _____

State _____

Zip _____

School Phone _____

Fax _____

Contact Mobile (Day of Visit) _____

Grade _____

Students _____

School Staff _____

Parents/Chaperones _____

First Date Choice _____

Second Date Choice _____

Third Date Choice _____

Earliest Arrival Time _____

Latest Departure Time _____

I have students with special needs

Yes

No

If yes, please share any any additional information or helpful details.

How did you hear about us?

Directions to the Museum

Coming from the North

Take I-110 south to the business district.
Exit at North Street/Capitol Park (right-hand exit 1G off I-110).
Follow the service road and turn right at the second red light onto North Street. Proceed down North Street toward the river. Turn left onto River Road. Go 5 blocks.
The Museum is on the right, across the street from the Old State Capitol.

Coming from the West or South

Take I-10 to I-110 (business district).
Exit at North Street (left-hand exit 1D off I-110).
Proceed down North Street toward the river. Turn left onto River Road. Go 5 blocks.
The Museum is on the right, across the street from the Old State Capitol.

Coming from the East

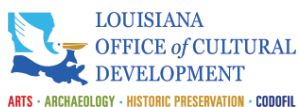
Take I-12 to I-10 to I-110 (business district).
Exit at North Street (left-hand exit 1D off I-110).
Proceed down North Street toward the river. Turn left onto River Road. Go 5 blocks.
The Museum is on the right, across the street from the Old State Capitol.

Parking & Drop Off

Buses should come from the north to the south for a safe area to drop off students.
There is a **new bus parking lot** near River Road and State Capitol Drive, near the current State Capitol building.

With Thanks

These programs have been made possible in part through the generous support of the members of Louisiana Art & Science Museum and the East Baton Rouge City-Parish Government. LASM is supported by a grant from the Louisiana Division of the Arts, Office of Cultural Development, Department of Culture, Recreation and Tourism, in cooperation with the Louisiana State Arts Council. Funding has also been provided by the National Endowment for the Arts. Art Works. Science programming is generously supported in part by BASF and CPRA; art exhibitions are generously supported in part by Entergy. *Frameworks of Absence: Brandon Ballengée* is supported in part by The Law Offices of R. Gray Sexton.



Parking & Drop-Off

